

Model 2810-2815



Ceiling lift

Ideal for independent use



- Independent transfer possible with Handi-Move® Body Support
- Accommodates conventional slings
- Motor and rail systems make it possible to access all areas
- Automatic stop at any desired spot
- Sideways movement with adjustable speed
- Wireless control optional
- Back-up control on motor
- Mechanical emergency down feature that can be enabled by the user

Lift & Care systems for people with reduced mobility

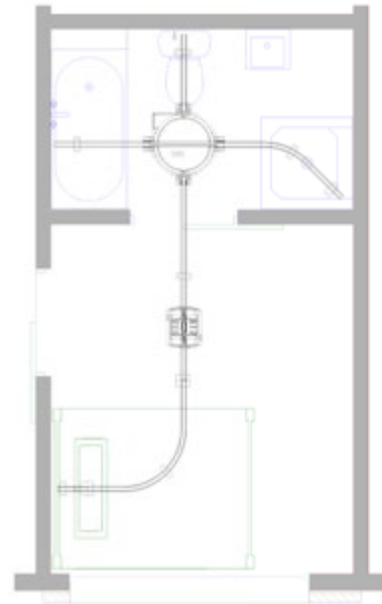
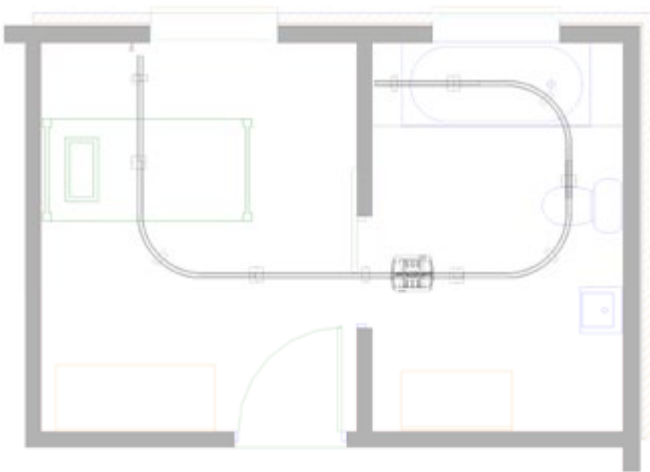
www.handimove.com

Ceiling lift

● Technical specifications

Safe working load	200 kg (3000 mm motorband: 160 kg)
Batteries	2 x 12 V 8 Ah/ rechargeable
Standard motor band length	2000 mm (option:3000 mm)
Rail System	aluminium, lacquered in white
Smooth stop and go	electronic
Cover	ABS
Emergency down	mechanical
Handcontrol 2810	watertight IP67 electric
Handcontrol 2815	infra-red
Number of lifts with fully charged batteries	160
Load and battery indications	visual and auditive
Charger	input 0.9 A 100-240 Vac,50-60 Hz Class II
.....	output 24 Vdc Max 1.3 A (9940) Max 1.2 A (2541)

● Examples of routes



● Versions

2810 L

Lifting motor (up / down) and lateral motor (left/right)
With electric handcontrol

2815 L IR

Lifting motor (up / down) and lateral motor (left/right)
With infra-red remote control

For free demonstration or further information

